



ATTN: \_\_\_\_\_ @ NABCO

FROM: \_\_\_\_\_

COMPANY: \_\_\_\_\_

PHONE #: \_\_\_\_\_

**STEP 1:**

IDENTIFY SWITCHBOARD/PANELBOARD TYPE: \_\_\_\_\_

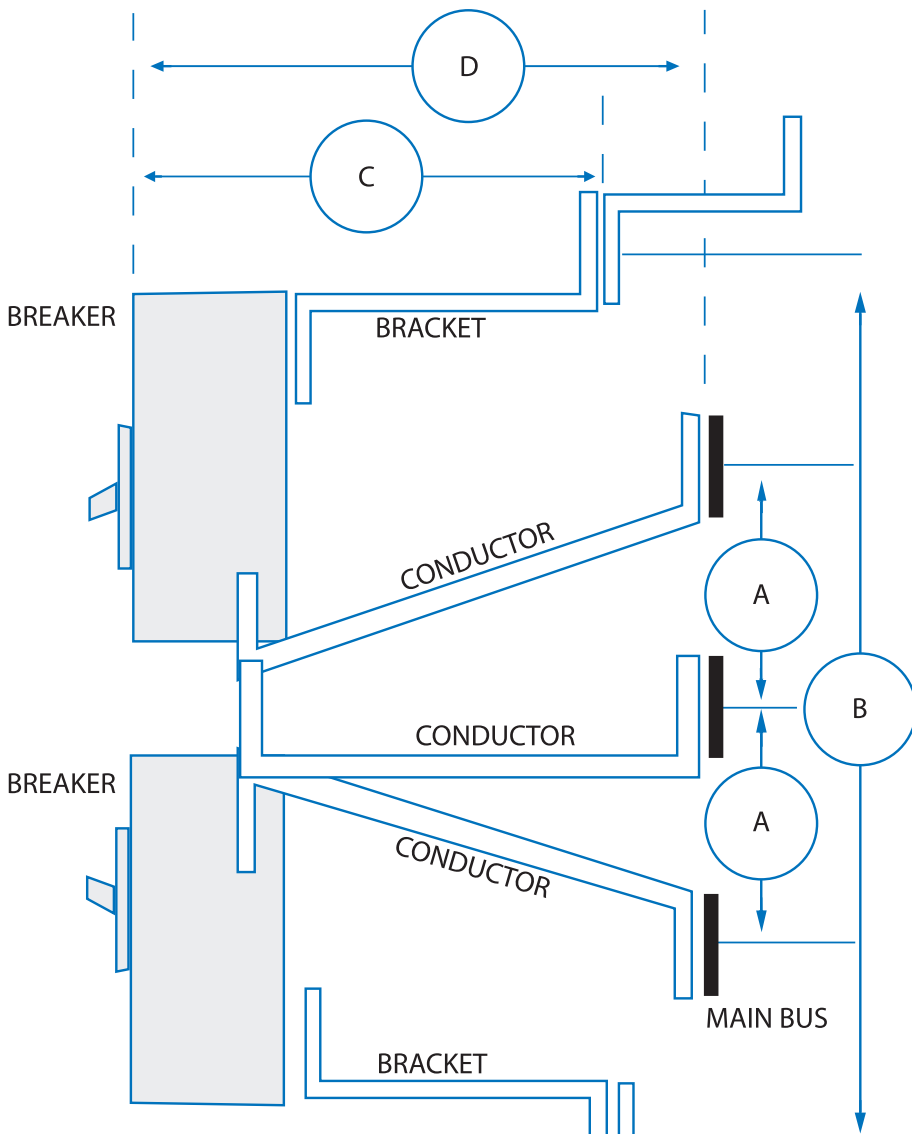
CIRCUIT BREAKER TYPE: \_\_\_\_\_

MODEL: \_\_\_\_\_ YEAR: \_\_\_\_\_

BRAND: \_\_\_\_\_ TWIN or SINGLE: \_\_\_\_\_

**STEP 3:**

SIDE VIEW of BREAKER IN PANELBOARD/SWITCHBOARD



MEASUREMENTS FOR "A": \_\_\_\_\_  
(DISTANCE FROM CENTER TO CENTER ON BUS BAR)

MEASUREMENTS FOR "B": \_\_\_\_\_  
(DISTANCE FROM RAIL TO RAIL)

MEASUREMENTS FOR "C": \_\_\_\_\_  
(INSIDE SUPPORT RAIL TO FACE OF C/B)

MEASUREMENTS FOR "D": \_\_\_\_\_  
(DISTANCE FROM FACE of BUS BAR to TOP of C/B)

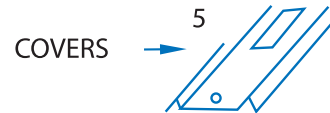
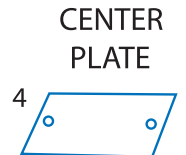
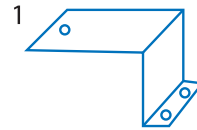
**STEP 2:**

CIRCLE ALL THAT APPLY

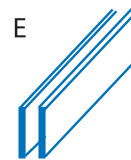
IDENTIFY END BRACKET and COVER/FILLER PLATES: 1, 2, 3, 4, 5, 6, 7, 8.

END BRACKET

COVERS



IDENTIFY BUS BAR TYPE: E, F, G, H, I, J, K.



MAIN BUS BAR

